

Naval Cover Fakes, Forgeries and Frauds, Part VII

Rich Hoffner (H-4456)
415 Moyer Rd.,
Souderton PA 18964-2319
pacoastie@att.net



Fraudulent Covers of Ron Reeves

Ronald Reeves joined the USCS in 1968 as member # 6225. His cover producing days appear to have begun around 1979. Reeves provided a wealth of information to the society, as he was dogged about verifying dates of ship events and sharing this information with the society and other cover sponsors. He did his covers from Jasper Street in the Kensington section of Philadelphia and later at West Collingswood Heights NJ, using a P.O. Box in Mt. Ephraim NJ. Reeves used a Kelsey letterpress to do most of his printing, although some covers can be found with rubber stamp cachets. His printed cachets can be identified with his numbering system, the letter R followed by the number of the cover, such as R-275 (Christening USS MITSCHER (DDG 57), postmarked at Pascagoula MS on 15 May 1993). Some of his early events have the number rubber stamped on the reverse, an example; RON'S No. 63. Not all of the covers produced by Reeves have fraudulent postmarks applied. I have reviewed many covers that are postmarked, both with USPS post office cancels and with U S Navy shipboard cancels that are genuine.

However, it is very evident that the majority of the covers he produced do have fraudulent postmarks. Below is a list of known shipboard postmarks that Reeves made. Not on this list are fraudulent postmarks applied to covers that may have been acquired by Reeves from others and had the postmark added later, sort of "ad-on" cancels.

Ship postmarks:

ALBERT DAVID	FF-1050	2tnu
BADGER	FF-1071	2-1(n+)
BADGER	FF-1071	9-1(n+u)
BELKNAP	CG-26	2-1a(n)
BELKNAP	CG-26	2t(n+u)
BUNKER HILL	CG-52	2-2t(n+)
BUNKER HILL	CG-52	9-2(n+)
CAPE COD	AD-42	2-1(n)
CAPE COD	AD-42	9-2(n+)
CLARK	FFG-11	2-1n
CLARK	FFG-11	9-1nu
COCHRANE	DDG-21	9-1
COMTE DE GRASSE	DD-974	2-1(n+)
COMTE DE GRASSE	DD-974	9-1(n+u)
COOK	FF-1083	F (C102a)
CROMMELIN	FFG-37	2-1(n+)
CURTS	FFG-38	2-1(n)
DOWNES	FF-1070	2-1(n+)
DOWNES	FF-1070	9-1n+u
ESSEX	LHD-2	F (E-39)
ESSEX	LHA-2	F (E-39a)
FULTON	AS-11	9-1(n+u)
HALYBURTON	FFG-40	2-1(n)

HAYLER	DD-997	2-1(n+)
HEPBURN	FF-1055	2-1(n+)
HEPBURN	FF-1055	9-1(n+u)
HUE CITY	CG-66	2-2t(n+)
HUE CITY	CG-66	9-2(n+)
IOWA	BB-61	2-1(n)
JARRETT	FFG-53	2t(n+u)
JARRETT	FFG-53	9(n+u)
JOHN L. HALL	FFG-32	9-1(n+u)
LEXINGTON	AVT-16	2-1(n+)
LEXINGTON	AVT-16	9-1(n+u)
LYNDE McCORMICK	DDG-8	9-1(n+u)
McCLUSKY	FFG-41	2-1(n+) error (McCluskey)
MEYERKORD	FFG-1058	2-1t(n+) U S Navy at bottom
MEYERKORD	FFG-1058	9-1(n+u)
MISSOURI	BB-63	2-1(n+)
MISSOURI	BB-63	9-1(n+u)
MOBILE BAY	CG-53	2-1n
MOBILE BAY	CG-53	9-1(n+u)
MOOSBRUGGER	DD-980	2-1(n+)
MOOSBRUGGER	DD-980	9-1(n+u)
MOUNT WHITNEY	LCC-20	2-1(n+)
NEW JERSEY	BB-62	2-1(n)
NEW JERSEY	BB-62	9-1nu
PHILIPPINE SEA	CG-58	2-1(n+)
PHILIPPINE SEA	CG-58	9-1(n+u)
PROTEUS	AS-19	2-1(n+)
PROTEUS	AS-19	F (P-50b)
PROTEUS	AS-19	9-1(n+u)
REID	FFG-31	9-1(n+u)
ST. LOUIS	LKA-116	2-1(n+)
ST. LOUIS	LKA-116	9-1(n+u)
SARATOGA	CV-60	2-1(n+)
SCOTT	DDG-995	2-1(n+)
SCOTT	DDG-995	9-1(n+u)
STEPHEN W. GROVES	FFG-29	2-1(n)
STEPHEN W. GROVES	FFG-29	9-1(nu)
SWORDFISH	SSN-579	2-1n
TATTNALL	DDG-19	2(n+)
THACH	FFG-43	2-1(n+)
THACH	FFG-43	9-1(n+u)
TICONDEROGA	CG-47	2-1(n+)
TICONDEROGA	CG-47	9-1(n+u)
TISDALE	FFG-27	2-1(n+) error should be Mahlon S. Tisdale
TISDALE	FFG-27	9-1(n+u) error
VALLEY FORGE	CG-60	2-1(n)
VINCENNES	CG-49	2-1(n)
W. S. SIMS	FF-1059	2t(n+u)
W. S. SIMS	FF-1059	9-1(n+u)
YORKTOWN	CG-48	2-1(n)
YORKTOWN	CG-48	9-1(nu)

A total of 72 ship postmarks are known fraudulent at this time. This is not a complete list as more will no doubt be discovered in the future.

Chapter member, Navy Shipyard employee

Reeves was a member of Stephen Decatur Chapter #4 and an early cachet director of the chapter. It is unknown how many covers he serviced as cachet director, nor if any of those bore fraudulent cancels. Such covers usually had rubber stamp cachets or wording, and were not printed. Many of the events were for ships entering the Philadelphia Naval Shipyard ("Welcome to Philadelphia"), where Reeves worked as a civilian employee of the yard. He also covered many ships visiting Philadelphia's Penn's Landing. He had access to every ship that came into the yard and many covers were serviced aboard these ships by Reeves. He was also "helpful" to several chapters and cover sponsors with his cancels, and these fraudulent cancels are to be found on covers from several chapters, both on the east and west coasts. Reeves was also a key figure in many shipboard fancy cancels. He had access to many postal clerks. He would suggest fancy postmarks for various events, secure permission in writing and present the ships postal clerk with the T-F fancy cancels. Some were anniversaries, some commissionings, decommissionings and holidays. Most of these will be found listed in the catalog of postmarks. Since he had permission from the ships to do these fancy cancels, they are not considered fraudulent cancels and are listed as T-F in the cancel catalog.

USPOD/USPS Post Office cancels listed below are known to have been made by Reeves:

- Bath ME 04530, four bar (like t-2)
- Bremerton WA Naval Base Sta. USPS, all purpose cancel (like t-9)
- Camden NJ, all purpose cancel (like t-9)
- Charleston SC Naval Base Br USPO, all purpose cancel (like t-9)
- COMPHIBRON TWO MLSG, four bar cancel, (like t-2)
- COMPHIBRON TWO MLSG all purpose chop (like t-9)
- Groton CT 06340 (four bar cancel, like t-2)
- Honolulu HI Submarine Base Sta USPO, all purpose cancel (like t-9)
- Honolulu HI Submarine Base Sta. USPS (like t-9)
- Jacksonville FL Mayport Navy Station USPO, all purpose cancel (like t-9)
- Key West FL 33040 four bar cancel (like t-2)
- New Orleans LA 70113 (like t-2 without bars)
- Newport News VA USPO, (like t-9)
- Norfolk VA Fleet Br. USPO, all purpose cancel (like t-9)
- Norfolk VA 235, (like t-2 without bars)
- Norfolk VA USPO, all purpose cancel (like t-9)
- Pascagoula MS 39567 four bar cancel (like a t-2)
- Pascagoula MS USPO All purpose cancel (like t-9)
- Pascagoula MS pictorial "Ship Christening Station"
- San Diego CA 92110 three bar cancel
- San Pedro CA USPO (like t-9)
- Silverdale, Bangor WA 98315, Four bar (like t-2)
- U S Naval Base Station Philadelphia PA 19112 (like t-9)

A total of 23 Post offices, stations and branches are known fraudulent at this time.

How were the postmarks produced?

These fraudulent postmarks were "manufactured" by Reeves, through a simple process of making the cancels first by having a die made of the original cancel, then making it on a rubber stamp making machine. The original cancel would of course have to be "cleaned" of the postage stamp that was copied with the cancel, and the application of white out corrected this problem. There are companies who manufacture zinc printing dies, mounted on wood. These dies are many times used for printing on a letterpress. The same dies can be used to make a rubber stamp. First, a reverse impression of the die is "embossed" into a matrix board. This matrix board is then used in a process of applying uncured rubber to the matrix, then placing it into a stamp making machine. It is heated; then pressure applied. The uncured rubber, with pressure and heat applied, will produce a rubber stamp of whatever the impression was in the matrix board, thus a copy of the postmark wanted. However, in most cases the stamp made does not have the crisp appearance of an original postmark, and many times consistent imperfections will show on the impression made. This was evident in Pascagoula and Bath post office cancels. I am in possession of the matrix board used in this process; the zinc dies mounted on wood have been destroyed. Examples of several of the matrix boards are shown below.



Matrix shows Silverdale Bangor WA 98315, Bath ME 04530, Pascagoula MS USPO and Jacksonville FL Mayport Navy Station USPO

Expulsion of Ronald Reeves from USCS Membership

Numerous reports of fraudulent postmarks on covers produced by Reeves surfaced for a number of years. He was admonished on several occasions by the then editor of the postmark catalog, and each time he was warned he vigorously stated he would no longer make any fraudulent cancels. However, he continued, even after several more verbal warnings from members of the board of directors of the society. On or about 19 March 1997 Reeves was expelled from membership in the USCS. He denied any wrongdoing and soon after provided what he presented as proof that one of the reported fraudulent cancels was not fraudulent; however, still in the hands of the U S post office at Bath ME.

Reeves had the clerk at Bath ME provide him with strikes of what appeared to be eight hand cancels that the clerk had access to, then provided these strikes as evidence that the reported fraudulent cancel was in fact in the custody of the clerk. Unfortunately, for Reeves, our society president at the time, Paul Huber, called the post office to check on the cancels provided by Reeves as his "proof." The clerk mailed the original piece of paper with the original strikes on. However, only seven cancels appeared and the Reeves fraudulent cancel was not on the original. However, it did appear as a eighth cancel on the photo copy presented by Reeves as his evidence of his innocence. Both the original sheet of paper provided by the USPS in Bath and the thermograph fax paper copy from Reeves to which he added the fraudulent postmark are in the archives of the USCS. The original is scanned and shown here as well as the altered document below it.

Known Ron's Cachets "R" Covers with Fraudulent Postmarks

Covers were produced with numbers R-1 through R-286 from information contained in his price lists and notes from 1996. However, a check of a few updated lists indicated he may have issued numbers up to R-290. Those same price lists also show "special" covers, numbered as "Ron's #1 through Ron's #87." These "special" covers varied in subject from First Day of Issue for stamps, to Papal visits and various naval ship events. This series is apparently different from those listed below. I did not have any of these "special" covers to examine.

- R-26 LDC HENRY B. WILSON DDG-7 San Diego 10-2-89
- R-28 LDC FARRAGUT DDG-37 10-30-89
- R-29 LDC CLAUDE V. RICKETTS DDG-5 Norfolk VA 10-31-89
- R-30 LDC LAWRENCE DDG-4 Norfolk VA Fleet Br. 3-30-90
- R-31 LDC JOSEPH STRAUSS DDG-16 Honolulu HI Submarine Base Sta 2-1-90
- R-32 LDC JOHN KING DDG-3 Norfolk VA Fleet Br 3-30-90
- R-34 LDC CHARLES F. ADAMS DDG-2 Jacksonville FL Mayport Navy Sta 8-1-90
- R-37 Deact. JACK SSN-605 USS Fulton 9-12-89
- R-40 Deact. GLENARD P. LIPSCOMB SSN-685 Norfolk VA 235 12-14-89
- R-42 Deact. SCCULPIN SSN-590 Norfolk VA Fleet Br. 11-3-89
- R-43 50th Anniv. PRAIRIE AD-15 (actual ships T2 & T-9 on cover) fraudulent Camden NJ pmk. added 12-9-89
- R-46 Deact. DANIEL WEBSTER SSBN-626 Charleston SC Naval Base Br 8-30-90
- R-47 Deact. HADDO SSN-604 San Diego 5-18-90
- R-48 Deact. QUEENFISH SSN-651 Honolulu HI Submarine base Sta 9-21-90
- R-49 Deact. SEA DEVIL SSN-654 Charleston SC Naval Base Br 2-8-91
- R-52 LDC COCHRANE DDG-21 10-1-90
- R-55 Chris. HAYLER DD-997 Pascagoula MS 3-27-83
- R-56 LDC TATTNALL DDG-19 Ships T-2 and Jacksonville FL Mayport Naval Station
- R-60 LDC SAMPSON DDG-10 Jacksonville FL Mayport Naval Station
- R-60 (number duplicated) FDC TICONDEROGA CG-47 1-28-03 T-2
- R-64 Deact. JOHN MARSHALL SSN-611 Norfolk VA 11-23-91
- R-70 Deact. SAM HOUSTON SSN-609 Honolulu HI Submarine Base Sta 2-1-91
- R-71 Deact. TINOSA USS Fulton 5-10-91
- R-73 Keel CG-50 Pascagoula MS 4-14-83
- R-76 Chris. YORKTOWN CG-48 4-16-83



Original document verifying cancels on hand at Bath post office.



Altered document provided by Reeves as his "proof", note additional postmark applied

- R-78 LDC DAHLGREN DDG-43 Norfolk VA Fleet Br. 7-31-92
- R-79 LDC PREBLE DDG-46 Norfolk 11-15-91
- R-81 Chris. VINCENNES CG-49 4-14-84
- R-82 Keel CG-51 Bath ME 8-31-84
- R-82 (Number duplicated) LDC BENJAMIN STODDERT DDG-22 Honolulu HI Submarine Base Sta 12-20-91
- R-83 LDC WADDELL DDG-24 10-1-92
- R-87 Deact. GUITARRO SSN-665 San Diego 9-13-91
- R-90 Comm. YORKTOWN CG-48 7-4-84
- R-90 (Number duplicated) Operation Desert Storm Cachet LDPS MISSOURI BB-63 T-2, T-9 2-28-92
- R-92 Keel CG-53 Pascagoula MS 6-5-84
- R-94 Keel CG-54 Pascagoula MS 11-15-84
- R-95 Chris. VALLEY FORGE CG-50 Pascagoula MS 9-29-84
- R-96 Comm. VINCENNES CG-49 7-6-85
- R-97 Comm. VALLEY FORGE CG-50 1-18-86
- R-99 Keel CG-55 Pascagoula MS 3-18-85
- R-100 Chris. BUNKER HILL CG-52 Pascagoula MS 4-13-85
- R-101 Keel CG-52 Pascagoula MS 1-11-84
- R-106 Chris. MOBILE BAY CG-53 Pascagoula MS 10-12-85
- R-107 Keel CG-56 Pascagoula MS 7-22-85
- R-112 Chris. ANTIETAM CG-54 Pascagoula MS 4-19-86
- R-114 Chris. LEYTE GULF CG-55 Pascagoula MS 10-11-86
- R-116 Keel CG-47 Pascagoula MS 3-3-86
- R-119 Comm. BUNKER HILL CG-52 9-20-86
- R-121 Keel CG-58 Bath ME 4-14-86
- R-122 LDPS CLARK FFG-11 8-15-85
- R-127 Chris. SAN JACINTO CG-56 Pascagoula MS 1-24-87
- R-128 Keel CG-59 Pascagoula MS 10-13-86
- R-130 Keel CG-160 Bath ME 7-7-87
- R-133 Chris. LAKE CHAMPLAIN CG-57 Pascagoula MS 4-25-87
- R-135 Keel CG-61 Bath ME 8-25-87
- R-136 Chris. PHILIPPINE SEA CG-58 Bath ME 7-12-87
- R-138 Keel CG-62 Pascagoula MS 6-24-87
- R-141 Keel ESSEX LHD-2 Pascagoula MS 3-20-89
- R-142 Keel CG-63 Bath ME 12-23-87
- R-143 Chris. WASP LHD-1 Pascagoula MS 9-19-87
- R-144 Chris. PRINCETON CG-59, Pascagoula MS 10-17-87
- R-145 Keel CG-64 Bath ME 8-17-88
- R-146 Chris. GUNSTON HALL LSD-44 New Orleans LA 6-27-87
- R-148 Chris. NORMANDY CG-60 Bath ME 3-19-88
- R-149 Keel CG-65 Pascagoula MS 7-18-88
- R-150 Chris. MONTEREY CG-61 Bath ME 10-23-88
- R-151 FDC PRESERVER ARS-8 Norfolk VA 235 9-26-87
- R-152 Chris. ESSEX LHD-2 Pascagoula MS 3-16-91
- R-153 FDC PHILIPPINE SEA CG-58 Legitimate cancel applied on wrong date (7-4-89) additional cancel applied (fraudulent) 3-18-89 T-2
- R-154 Chris. CHANCELLORSVILLE CG-62 7-23-88
- R-155 FDC PAIUTE ATF-159 Norfolk VA 9-30-88
- R-156 Comm. PAPAGO ATF-160 Norfolk VA 9-30-88
- R-157 Comm. CONSERVER ARS-39 Honolulu HI Submarine Base Sta 9-25-89
- R-158 Chris. COMSTOCK LSD-45 New Orleans LA 1-16-88
- R-159 LDC SARGO SSN-583 Honolulu HI Submarine Base Sta 2-26-88
- R-162 Keel CG-66 Pascagoula MS 2-20-89
- R-165 LDC ANDREW JACKSON SSBN-619 Charleston SC Naval Base Sta 8-31-89
- R-166 Keel ARLEIGH BURKE DDG-51 Bath ME 12-14-87
- R-168 Keel CG-67 Bath ME 8-11-89
- R-169a Comm. NORMANDY CG-60 12-19-89
- R-170 Keel CG-68 Pascagoula MS 8-21-89
- R-171 Chris. COWPENS CG-63 Bath ME 3-11-89
- R-173 Chris. TORTUGA LSD-46 New Orleans LA 6-18-88
- R-175 LDC SCULPIN SSN-590 Newport News VA 8-3-90
- R-178 Keel DDG-52 Pascagoula MS 2-26-90
- R-179 KL KEARSARGE LHD-3 Pascagoula MS 5-5-90
- R-181 LDC BONEFISH SS-582 Charleston SC Naval base Br 9-28-88
- R-187 LDC JAMES MONROE SSBN-622 Bremerton WA Naval Base Sta 9-25-90
- R-188 LDC HENRY CLAY SSBN-625 Charleston SC Naval base Br 11-2-90
- R-189 Chris. RUSHMORE LSD-47 New Orleans LA 5-6-89
- R-191 Chris. GETTYSBURG CG-64 Bath ME 7-22-89
- R-193 Keel JOHN C STENNIS CVN-74 Newport News VA 3-13-91
- R-194 Keel CG-69 Pascagoula MS 5-30-90
- R-195 LDC BARB SSN-596 Bremerton WA Naval base Sta 12-20-89
- R-197 Chris. ASHLAND LSD-48 New Orleans 11-11-89
- R-199 Chris. CHOSIN CG-65 Pascagoula MS 10-14-89
- R-201 Keel LSD-49 New Orleans LA 4-15-91
- R-203 Keel CG-70 Bath ME 3-6-90 R-204 Chris. HUE CITY CG-66 Pascagoula MS 7-21-90
- R-205 Keel DDG-53 Bath ME 8-8-90
- R-206 Launch ARLEIGH BURKE DDG-51 Bath ME 9-9-89
- R-209 Keel DDG-54 Bath ME 2-12-91
- R-213 Lau. SUPPLY AOE-6 San Diego CA 92110 10-6-90
- R-214 Chris. SHILOH CG-67 Bath ME 9-8-90
- R-215 Chris. ANZIO CG-68 Pascagoula MS 11-10-90

- R-215 (number duplicated) Keel RANIER (misspelled) AOE-7 San Diego 92110 5-31-90
- R-217 Keel DDG-56 Bath ME 9-3-91
- R-218 Keel CG-71 Pascagoula MS 11-19-90
- R-219 Keel BOXER LHD-4 Pascagoula MS 4-1-91
- R-222 LDC GLENARD P. LIPSCOMB SSN-685 Bremerton WA naval Base Sta 7-11-90
- R-224 Keel CG-72 Pascagoula MS 4-22-91
- R-225 LDC BARBEL SS-580 Honolulu HI Submarine Base Sta 12-4-89
- R-228 LDC TINOSA SSN-606 Bremerton WA Naval Base Br 1-15-92
- R-230 Chris. JOHN PAUL JONES DDG-53 Bath ME 10-26-91
- R-233 Keel CG-73 Pascagoula MS 11-20-91
- R-236 Chris. VICKSBURG CG-69 Pascagoula (pictorial) MS 10-12-91
- R-237 Keel ARCTIC AOE-8 San Diego CA 92110 12-2-91
- R-240 Keel DDG-55 Pascagoula MS 6-17-91
- R-242 LDC FULTON AS-11 T-9 9-26-91
- R-245 Keel DDG-57 Pascagoula MS 2-10-92
- R-247 Chris. CAPE ST. GEORGE CG-71 Pascagoula (pictorial) MS 4-11-92
- R-249 Keel DDG-58 Bath ME 3-24-92
- R-253 Keel DDG-59 Pascagoula MS 7-27-92
- R-255 Chris. STOUT CG-55 Pascagoula MS 10-24-92
- R-256 Chris. KEARSARGE LHD-3 Pascagoula MS (pictorial Chris sta) 5-16-92
- R-258 Keel DDG-60 Bath ME 4-25-92
- R-263 Chris. LAKE ERIE CG-70 Bath ME 7-13-91
- R-268 Chris. CURTIS WILBUR DDG-54 Bath ME 5-16-92
- R-269 Chris. VELLA GULF CG-72 Pascagoula (pictorial) MS 7-25-92
- R-270 Chris. JOHN S. McCAIN DDG-56 Bath ME 9-26-92
- R-272 Keel LSD-50 New Orleans LA 70133 11-8-91
- R-273 Lau. RANIER (misspelled) AOE-7 San Diego CA USPO 9-28-91
- R-274 Chris. LABOON DDG-58 Bath ME 2-20-93
- R-275 Chris. MITSCHER DDG-57 Pascagoula MS 5-15-93
- R-276 Chris. PORT ROYAL CG-73 Pascagoula (pictorial) MS 12-5-92
- R-281 Keel DDG-61 Pascagoula MS 1-4-93
- R-282 Keel DDG-62 Bath ME 2-9-93
- R-283 Chris. BOXER LHD-4 Pascagoula MS 8-28-93
- No number: LDC HERMITAGE LSD-34 Norfolk VA 235 10-2-89

A total of 139 covers are listed above, produced as Ron's Cachets with known fraudulent cancels.

Guide for Checking Your Covers

Several tell-tale indicators can be found on Reeves fraudulent cancels:

At times, a split is seen in the numerals "9" or "8" in the daters on the cancels. It appears in both Bath and Pascagoula cancels on various events.

Another much more noticeable indicator is seen on the Pascagoula MS four-bar cancels; it is easy to spot most of these. If you look between the "O" and "U" at the top of the strikes you will see a dot. It will not appear in a legitimate cancel.

As for Bath ME, a notch appears on these at approximately the 9 o'clock position on the outer circle of the dial.



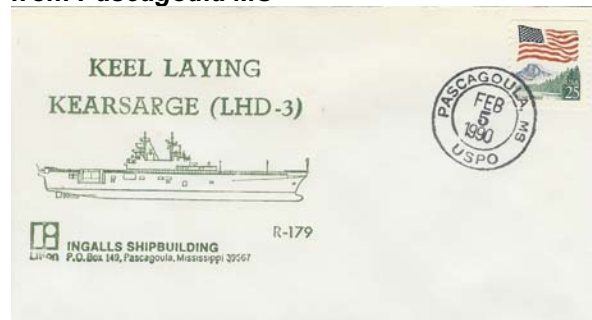
Fraudulent postmark from Pascagoula (note dot between O and U)



Legitimate postmark from Pascagoula



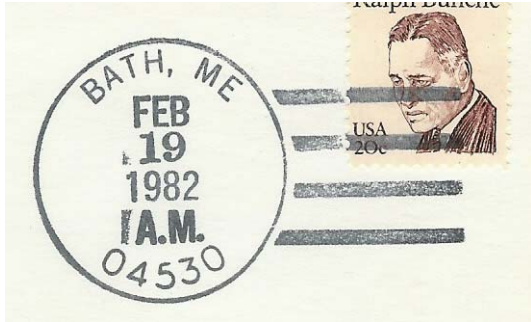
Reeves cover R-141 with fraudulent four-bar cancel from Pascagoula MS



Reeves cover R-179 with fraudulent all purpose cancel from Pascagoula MS



Fraudulent postmark from Bath ME (note nick at approximately 9PM on the dial).



Legitimate postmark from Bath ME.



Reeves R-166 with fraudulent Bath ME postmark



Reeves cover # R-179 with fraudulent Pascagoula all purpose cancel.



Reeves cover # R-46 showing use of fraudulent Charleston SC Naval Base Sta. all purpose cancel.

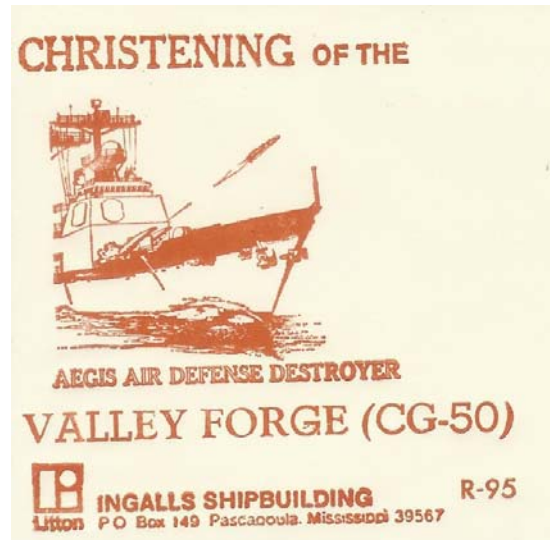
I have examined numerous Reeves cover numbers which had ship postmarks, and it appears that not all of his shipboard postmarks on cover were fraudulent. It is possible that he had some canceled aboard and did additional covers with fraudulent cancels. More research in this area is needed. An example is R-160 LDC USS SWORDFISH (SSN 579) 6-2-89. A cover was examined and the cancel appears to be legitimate. However, there is proof that a fraudulent cancel was made. All covers examined with machine cancels were found to be legitimate.



Reeves cachet R-160 with what appears to be a legitimate shipboard postmark.



Typical Reeves keel laying cachet.



Typical Reeves Christening cachet.

The list of known fraudulently postmarked Reeves covers totals 139 found to date. Many more covers are out there that are not on this list.



Unnumbered Reeves cachet with fraudulent Norfolk VA 235 postmark



Reeves cachet #R-256 shows usage of fraudulent Pascagoula MS pictorial "Ship Christening Station"

R & G Cachets (Ron Reeves and George Newman)

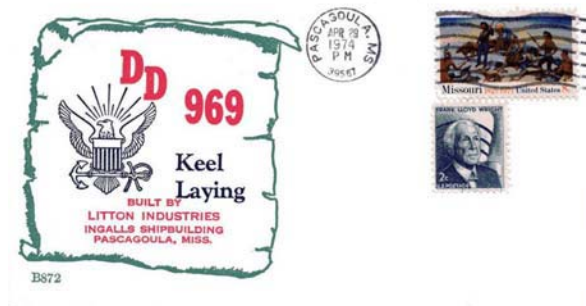
Ron Reeves also cosponsored a series of cachets with another USCS member, George Newman. They issued the covers under the name RG Cachets. They covered a period of 1973 to 1979. The covers I have seen have the cover number printed as part of the cachet. The covers were printed by a professional printer, not by Reeves on his letterpress. I have reviewed 54 of these covers for fraudulent postmarks. I did come across one of the covers, which is shown below. It has the fraudulent Honolulu Sub Base postmark dated 1 December 1989. I suspect this was serviced much later than it was printed, considering it has two corrective labels attached, one changing the date in the cachet to 1989 and a second label changing the location from San Diego to Pearl Harbor, plus several stamps to match the postal rate when it was finally cancelled. All of the other R-G Cachets that I reviewed have legitimate cancels, many with machine postmarks, some with meter impressions from Pascagoula MS (Ingalls Shipbuilding meters) and a few with shipboard cancels for Commissionings.



RG cachet #A16- fraudulent Honolulu Sub Base pmk.



Beck cachet B872 with a Reeves fraudulent postmark



This is the actual Beck serviced cover

An interesting cover recently surfaced on eBay, and it was a Beck cachet with a fraudulent Reeves cancel for Pascagoula MS. One can only speculate how this came about. It is known that Morris W. Beck was not able to get all of his 1000 cachets serviced. Several fell through due to various reasons. Some collectors contacted him in later years seeking these printed but un-serviced covers. This may account for this cancel on a Beck cover.

Please contact this writer if you have any additional covers that you suspect, so the society can have a complete list of these fraudulent covers.

Thank you to those who contributed to this article. A special thanks to Greg Ciesielski, Larry Brennan, Bob Rawlins and Paul Huber.

VIRGINIA-Class Sub Updates

B. "Wolf" Pinkstaff (10,952)

Here is a follow-up from Electric Boat on forthcoming VIRGINIA-class subs and the lead building yards—EB-Electric Boat, Groton and NN-Newport News Shipbuilding:

SSN	BUILDER	NAME
778	EB	NEW HAMPSHIRE Commissioning Webpage http://www.usnewhampshire.org/
779	NN	NEW MEXICO
780	EB	MISSOURI
781	NN	CALIFORNIA
782	EB	MISSISSIPPI
783	NN	MINNESOTA
784	EB	NORTH DAKOTA